



IC Stratigraphy

Delve deeper into the stratigraphic understanding of your subsurface with an awareness of younging direction based on your stratigraphic standards (dictionaries and schemes) while mapping or displaying your wells.

Beyond the visualisation available with IC standard, it is possible to add Stratigraphic awareness to your database.

Relational Stratigraphic Schemes allow an additional understanding of a series of inputs (e.g. Period, Series, Stage). These Schemes can guide and build a deeper understanding of what your Well data is actually showing you.

That stratigraphic awareness can be applied to any zonal analysis or gridding compiled on your maps of your Wells. Mapping with Stratigraphic Awareness active, can reduce the time spent generating zonal analysis displays.

Additional display styles are added with the Stratigraphy licence, including plotting Sequence Stratigraphy 'triangles' and being

able to plot your well data in Age or True Stratigraphic Thickness instead of MD or TVD once those have been calculated.

The stratigraphic awareness can also be applied when building correlations to improve the real-world inter-well visualisations.

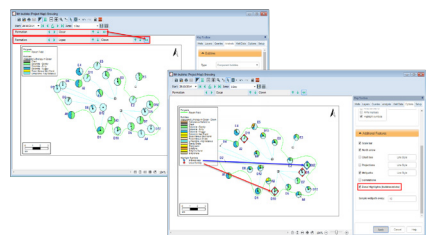


IMAGE 1: STRATIGRAPHICALLY AWARE MAPPING

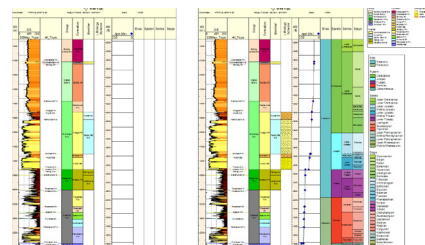


IMAGE 2: BUILDING AGE/DEPTH MAPPING

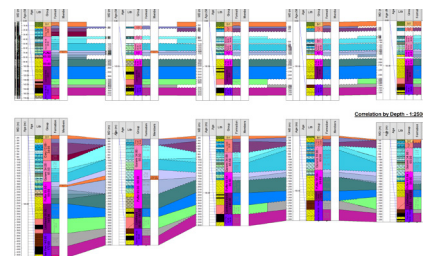


IMAGE 3: WHEELER DIAGRAM

Be insightful. Move to IC. Here are seven reasons why:

- **Its cleaner interface.** Working in one solution saves time, money and effort when interrogating your data to ensure confidence in your results.
- **Its adaptable display.** Integrate cross-functional analysis in a single dynamic interface.
- **Its interactive visualisations.** Utilise standard display styles to communicate across teams while modifying and updating interpretations directly during team discussions to see direct impact together.
- **Its visual, tidy access.** Easily build, display and share data across your teams to reduce uncertainties and QC all your data together.
- **Its smarts.** Utilise the stratigraphic rules you put in place to quickly understand, not only the vertical, but lateral relationships in the subsurface driven by geological concepts rather than computer algorithms.
- **Its security.** Work across teams and partners without limit, knowing you can set the level of access for each to ensure control is maintained.
- **Its transparent control.** Utilise powerful tools to standardise, manage and modify data in bulk or individually quickly. Work without interruptions and track any changes for an optimal user experience.



Features

Stratigraphic Scheme

Using Dictionaries, it is possible to build relationships between multiple related data types, e.g. chronostratigraphy or lithostratigraphy parent-child relationships. These relationships are then applied to the wells and uses them to build the rules used for displaying data throughout IC maps or charts.

Stratigraphic Displays

When working with a single wellstick or a correlation, it is possible to assign different vertical scales to the plots. When the Stratigraphic Awareness is active, Age (Ma) or True Stratigraphic Thickness (TST) are new vertical scaling options. This can build Wheeler diagrams easily to highlight local or regional unconformities across your correlation.

Strat Aware Mapping

Spatially-aware canvas shows the location of wells and allows zonal analysis. When building either Zonal bubbles or gridding zonal based on well data including the stratigraphic awareness allows IC to infer the applied zone within all wells if it has not been picked or is missing. This allows the grid or bubble to identify unconformable surfaces for you and generate a most probable result automatically.

Strat. Scheme Data Building

Use the rules set out by your Strat. Schemes to build new data within the database. Map geological age to specific depths, generate lower resolution "parent" intervals based on the placement of higher resolution

"children" while maintaining complete interactive editing capabilities. Scheme can be set at the Project or specific Well level across the database. A series of Schemes can be applied, chrono, litho and biostratigraphic for example.

Sequence Stratigraphy

Additional display options for data plotted in a wellstick includes the use of sequence stratigraphy triangles. The flexible setup lets you show sediment supply or accommodation space variations based on the interpretation of Sequence Boundaries, Max Flooding Surfaces and Max Regression Surfaces. System tracts can also be stored and displayed alongside any other well data.

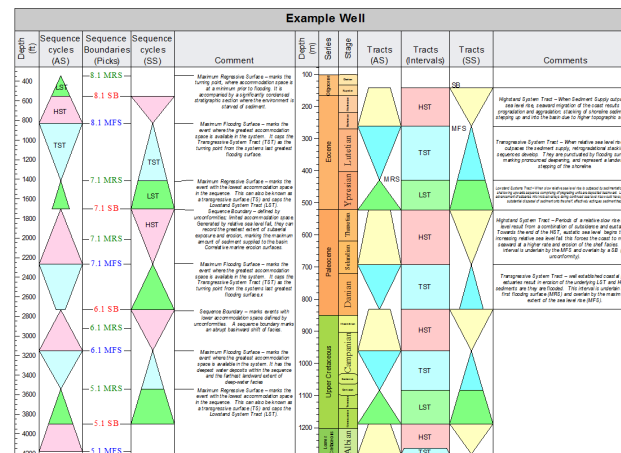


IMAGE 4: SEQUENCE STRATIGRAPHY DISPLAYS

It's the most powerful way to work. Geoscientists can:

- Using Stratigraphic Schemes to quickly identify missing data and unconformities on a map or within data types is much faster than manually checking each zone/pick one by one
- Utilising user-defined dictionaries to build Stratigraphic Schemes, allows you to maintain control over stratigraphic relationships at the highest level
- Calculating True Stratigraphic Thickness (TST) and using this with other parameters such as Measured Depth (MD), Age, and True Vertical Depth (TVDSS), giving you greater insight into the subsurface
- The flexible display options for both sequence pick boundaries and system tracts allow you to explore and present the subsurface interpretation clearly without data duplication
- Building related data quickly and maintaining the observed order in the hierarchies to quickly display step-changes in zonal analysis mapping is powerful and fast
- Utilise the widest range of vertical scale options on a single view to compare the lateral as well as the vertical stratigraphic variations across your basin quickly and easily



Get in touch

Please visit www.geoactive.com for more information
Or email softwaresupport@geoactive.com



Training

We offers training courses in various locations around the world for both IC and IP. We can also provide tailored in-house courses for individual clients, please email softwaresupport@geoactive.com

Sales

We have regional Account Managers to ensure all non-technical questions are answered across Europe and Scandinavia, the Americas, the Middle East, Asia and Pacific. To contact one of our sales teams for any of these regions, please email softwaresupport@geoactive.com

Software Support

Our web portal provides first class support by a team dedicated to our subsurface software products.

Email: ICsupport@geoactive.com

or Call:

UK: +44-2036088024

USA: +1-713-489-3995

