



# IC Geology

Advance your geological understanding with detailed mapping, correlations and visual reporting for both single and multi-well presentations for a wide range of your subsurface data for fully interactive displays between wells in depth, age and spatial displays.

In addition to the flexible structure afforded by the Platform capabilities, IC Geology provides the high-quality visualisation needed to produce well summaries, maps and correlation reviews. Integrate wellstick displays with analytical plots including scatter plots, heatmaps and ternary plots to produce detailed single-well summaries.

Working with both maps and multi-well displays, like correlations or cross-sections, you can build powerful field or basin reviews. Using Well templates, and summary chart templates, multiple reviews and digital report displays can be generated quickly and in bulk saving days of time.

Visual standardisation of displays is controlled at several levels; dictionaries at the database, defaults within the data managers and templates on the chart. Combine this with interactive editing to create powerful displays to enhance your interpretation.

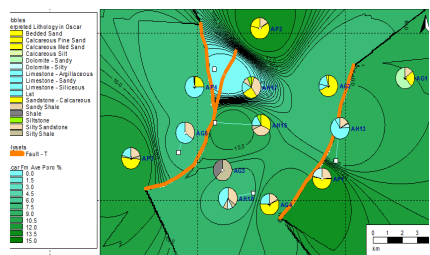


IMAGE 1: MAPPING

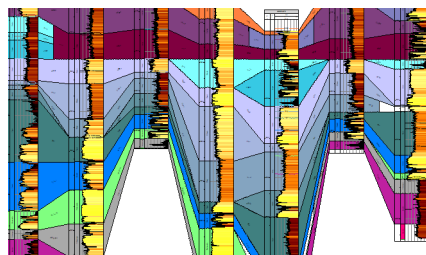


IMAGE 2: CORRELATIONS

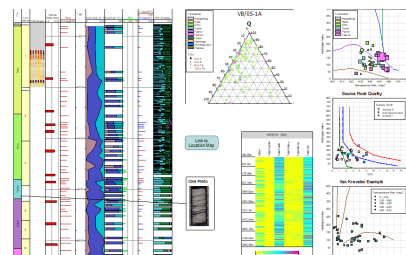


IMAGE 3: SINGLE WELL SUMMARY

Be insightful. Move to IC. Here are seven reasons why:

- **Its cleaner interface.** Working in one solution saves time, money and effort when interrogating your data to ensure confidence in your results.
- **Its adaptable display.** Integrate cross-functional analysis in a single dynamic interface.
- **Its interactive visualisations.** Utilise standard display styles to communicate across teams while modifying and updating interpretations directly during team discussions to see direct impact together.
- **Its visual, tidy access.** Easily build, display and share data across your teams to reduce uncertainties and QC all your data together.
- **Its smarts.** Utilise the stratigraphic rules you put in place to quickly understand, not only the vertical, but lateral relationships in the subsurface driven by geological concepts rather than computer algorithms.
- **Its security.** Work across teams and partners without limit, knowing you can set the level of access for each to ensure control is maintained.
- **Its transparent control.** Utilise powerful tools to standardise, manage and modify data in bulk or individually quickly. Work without interruptions and track any changes for an optimal user experience.





# Features

## Mapping

Spatially-aware canvas shows well location in conjunction with GIS shapefiles, seismically derived grids and fault polygons plotted on any Coordinate Reference System. Highlight specific wells or plot zonal analysis bubbles to highlight a specific component breakdown, sub/supracrop or log averages allowing manual interpretation of the lateral distribution across an area.

## Correlations

Generated directly from a Map, you can generate spatially aware cross-sections and correlate picks or zones across the wells. Integrate 3D Fault polygons or add your own interpretation to build a view across the area in subsurface. Multiple depth references can be used easily to highlight basin geometries or modified to depict an interpretive visualisation of your basin. Flexible display options allow the ties between wells to show the variation between well log responses or unit names easily.

## Single Well Summaries

Integrate multiple display objects, including scatter plots, wellsticks, core photographs, ternary plots or heatmaps and text, images and location maps. Generate a format of display that can easily be generated again and again for different wells while maintaining the company standard display style quickly.

## Basin-wide Summaries

Multi-well inputs using a map and wellstick templates can be used to generate a powerful, integrated interpretation of a field or basin. All objects can be used to display the same wells for a complete analysis review easily. Interactive canvas allows all data to be viewed and edited directly against other data and wells for complete visual control.

## 3D Viewer

Integrate subsurface topography surfaces, seismically derived fault polygons with wellpaths and well data in a flexible 3D Viewer to QC picks or understand the 3D spatial relationships between the well surface location and TD.

## Analysis Toolkits

Dig deeper into the data stored in the database by building highlight visual relationships in scatter plots, ternary plots or complex composite data plots. Structural data, analysis results or raw curves can be used to build a complete view for final interpretation.

## Template Designs

Standard wellstick designs that show chosen data alongside each other. Saved to the database, Templates can be used directly from a Map to build a quick look at a Well. Dynamic templates generate a single display for ALL data for a single well to allow a visual QC of the data coverage in the well.

It's the most powerful way to work.  
Geoscientists can:

- Visualise your data on a map to understand the spatial relationships and lateral distribution of your zone of interest easily.
- Map seismic interpretation against geological interpretation in a 3D Viewer and rotate the view to ensure complete understanding is available.
- Interactively update or add interpretations to a multi-well correlated display. Use faults, ties and drawing tools to take your correlation interpretations further.
- Integrate sample analysis results and multiple interpretation sources to build a complete understanding for each Well in detail.
- Expand your understanding of your individual wells by bringing them together with the use of interactive maps, chart objects and external images for a complete view of your basin or field.
- Visualise specific data sets or further analysis alongside geological and log data for a more complete understanding of the well or field.
- Standardise your display styles within easy to use Templates for any well and quickly apply to all, either as individual well summaries or within a correlation or field summary.





## Get in touch

Please visit [www.geoactive.com](http://www.geoactive.com) for more information  
Or email [softwaresupport@geoactive.com](mailto:softwaresupport@geoactive.com)



### Training

We offers training courses in various locations around the world for both IC and IP. We can also provide tailored in-house courses for individual clients, please email [softwaresupport@geoactive.com](mailto:softwaresupport@geoactive.com)

### Sales

We have regional Account Managers to ensure all non-technical questions are answered across Europe and Scandinavia, the Americas, the Middle East, Asia and Pacific. To contact one of our sales teams for any of these regions, please email [softwaresupport@geoactive.com](mailto:softwaresupport@geoactive.com)

### Software Support

Our web portal provides first class support by a team dedicated to our subsurface software products.

Email: [ICsupport@geoactive.com](mailto:ICsupport@geoactive.com)

or Call:

UK: +44-2036088024

USA: +1-713-489-3995

