



Be insightful. Move to IC. Here are seven reasons why:

- **Its cleaner interface.** Working in one solution saves time, money and effort when interrogating your data to ensure confidence in your results.
- **Its adaptable display.** Integrate cross-functional analysis in a single dynamic interface.
- **Its interactive visualisations.** Utilise standard display styles to communicate across teams while modifying and updating interpretations directly during team discussions to see direct impact together.
- **Its visual, tidy access.** Easily build, display and share data across your teams to reduce uncertainties and QC all your data together.
- **Its smarts.** Utilise the stratigraphic rules you put in place to quickly understand, not only the vertical, but lateral relationships in the subsurface driven by geological concepts rather than computer algorithms.
- **Its security.** Work across teams and partners without limit, knowing you can set the level of access for each to ensure control is maintained.
- **Its transparent control.** Utilise powerful tools to standardise, manage and modify data in bulk or individually quickly. Work without interruptions and track any changes for an optimal user experience.

IC Data Management (Platform)

Integrate your disparate data sets into a single platform that allows your entire team to work together flawlessly.

The basic framework of any IC database can be set and controlled within the IC Platform Licence. Working independently or as part of a team, the flexible SQL data store options allow you to assign security levels to each User.

As a Database Manager, you have complete control of the standardisation rules and security of each Project, Well and data held within the database.

This makes sharing and collaborating a safe and clear prospect for any team.

All changes and additions to the database are recorded in a history log to allow database review and data comparisons quickly. The benefits of quick resolution of any conflicts found in the data throughout a project can save a lot of time in the long run.

These Management tools work alongside powerful maintenance and QC utilities providing flexible organisation and manipulation of the data while maintaining a transparent understanding of the data history.

All data can be accessed and viewed directly from summary tables while the data managers allow data and log default setup and creation.

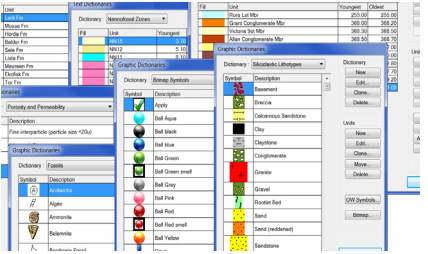


IMAGE 1: DICTIONARIES

Operation	Date	Time	User	Details
Connect	24 June 2015 09:42:30		Admin	Initial setup
Connect	23 June 2015 09:31:10		Admin	Initial setup
Connect	22 June 2015 12:26:42		Admin	Initial setup
Connect	22 June 2015 12:24:11		Admin	Initial setup
Connect	16 June 2015 11:55:25		Admin	Initial setup
Connect	10 June 2015 11:54:50		Admin	Initial setup
Connect	05 June 2015 09:07:04		Admin	Initial setup
Connect	31 May 2015 15:53:37		Admin	Initial setup
History Upgraded	29 May 2015 12:40:08		Admin	Initial setup
Connect	24 February 2014 10:32:27		Admin	Initial setup
Open_Project	24 February 2014 10:33:11		Admin	Initial setup
Connect	24 February 2014 10:33:10		Admin	Initial setup
Open_Project	24 February 2014 10:32:48		Admin	Initial setup
Open_Project	24 February 2014 10:29:48		Admin	Initial setup

IMAGE 2: AUDIT HISTORY

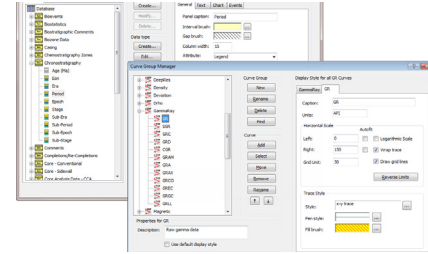
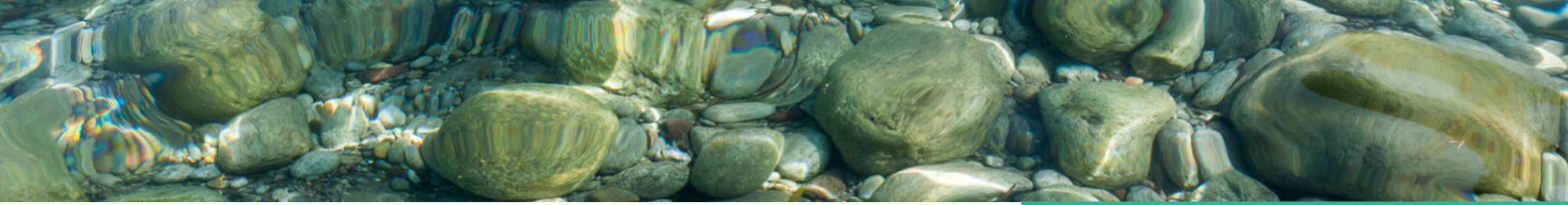


IMAGE 3: DISCRETE AND LOG DATA MANAGERS





Features

Data Management

Review and manage the data table structure for discrete and log data. Arrange the order and organisation of the data easily for the entire database. Split the database into manageable subsets of well-based Projects.

Standardisation Tools

Generate a suite of Dictionaries that allow standardised naming conventions across the entire data set for both text based or graphic based layout and naming.

Data Maintenance

Utilise powerful data QC toolkits that can reformat, rename, convert and move data to the most appropriate location within the database. This includes the change between Interpretations if active. Verify specific data types against standardised dictionaries already set up in the database.

Log Maintenance

Resample and depth shift logs easily for multi-wells quickly. It is also possible to flag logs as FINAL if wanted. The editing of logs can be done directly in the log browser, including a basic redraw at the set scale.

Data Import / Export

Import via direct data links to StrataBugs or IP or from ASCII (including excel), LAS and DLIS file formats directly. Link directly to external pictures or reports without having to duplicate any files. Multi-well and batch processes are available. All data brought in is listed in the project browser and data summaries.

Data Summaries

Tabular displays of the discrete and log data held for each well can highlight specific coverage of a dataset quickly. Direct access to the data from these summary tables opens the browser tables that allow you to see the specific data easily (and modify if you have permissions).

DB Scripts and Interpretation

With technical input and knowledge of what data you have where, you can build and save scripts that will access and format data into the IC datastore quickly. Use Interpretation flags to store different sourced data or different Users interpretations while maintaining control over the database structure.

Well Queries

Build search criteria to identify Wells within a database that contain specific parameters. Choose between well attributes, data coverage or specific zonal coverage to apply to the entire well list. These can be used to filter well lists in any table and stored for use again.

Data Security

Administer complete control over access to your well data for every individual User accessing the database. Lock down standardised dictionaries as well as specific data to be Read Only. Each login to the database is recorded and the history of the database, including data changes, can be reviewed and compared easily.

It's the most powerful way to work.
Geoscientists can:

- Integrate a multitude of data from drilling, core, stratigraphy, production and analysis in one place to generate a truly robust environment.
- Powerful data quality and management tools enable high standards to be met and maintained
- Maintain transparency of data ownership and modification throughout the database
- Quick and flexible import tools for ASCII, DLIS and LAS files
- Flexible data storage organisation allow any type of team to customise their database and work easily together
- Robust tabular summaries with direct access to the data allows faster review and editing
- Filter down large well lists quickly based on well data coverage or a complex relationship between multiple data.



Get in touch

Please visit www.geoactive.com for more information
Or email softwaresupport@geoactive.com



Training

We offers training courses in various locations around the world for both IC and IP. We can also provide tailored in-house courses for individual clients, please email softwaresupport@geoactive.com

Sales

We have regional Account Managers to ensure all non-technical questions are answered across Europe and Scandinavia, the Americas, the Middle East, Asia and Pacific. To contact one of our sales teams for any of these regions, please email softwaresupport@geoactive.com

Software Support

Our web portal provides first class support by a team dedicated to our subsurface software products.

Email: ICsupport@geoactive.com

or Call:

UK: +44-2036088024

USA: +1-713-489-3995

IC_Mod.Flyers_2022_V2.0

Updated: 8.September.2022

Copyright © Geoactive Limited 2022.

